

# Memory Watcher ver 2.1

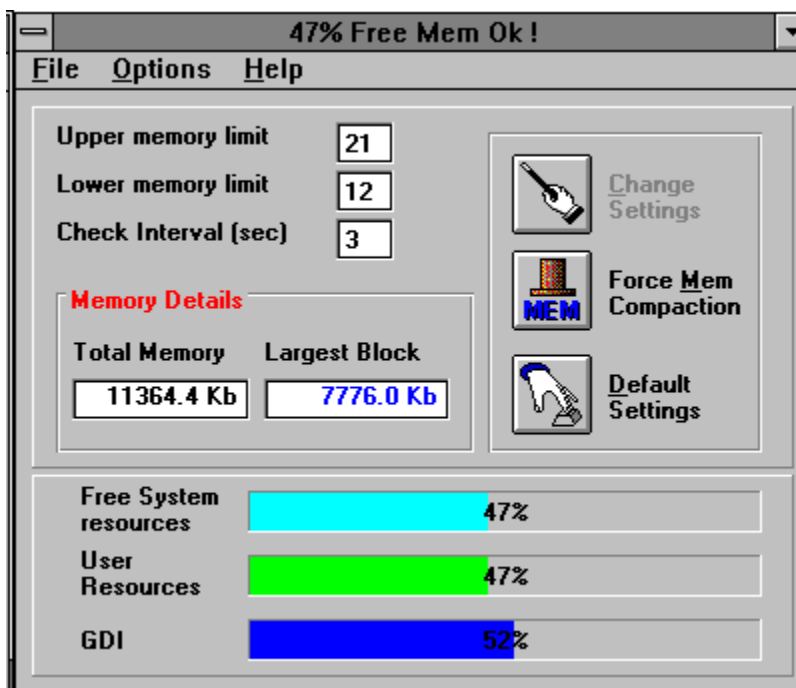
## Installation

Simply "unzip" MEMWATCH.ZIP into a directory of your choice and create a new Program Item in a group from Program Manager for Memory Watcher.

### NOTE:

Make sure that you have **THREED.VBX** and **VBRUN300.DLL** in your **C:\WINDOWS\SYSTEM** directory. (Both are available from forums on Compuserve)

## How to Use MEMWATCH



This is the main screen from which all the necessary information can be found about your system.

The 3 Bars display the availability of system resources in Windows. This is divided into 3 separate areas:

- Free System Resources**
- User Resources**
- GDI**

The main one is your **FSR** value. Should this go below a certain value then Windows can become unstable. To prevent this from occurring, I have put certain watch points into the program so that you can be warned about low memory before it can do any damage.

To do this you must set the **Upper and Lower Memory Limits**. They are reflected as a percentage of **Free System Resources (FSR)** and will act as early warning levels for Windows and yourself. To change these settings simply Click in the area displaying the value and type in a new value. The "**Change Settings**" button will become active, and all you have to do is click it to

make your changes permanent.

### ***Using the Log File***

It may be useful to know how much resources a specific program may take whilst in operation in Windows. I have provided the means to "log" information at User defined times to monitor the state of memory during an application's life time.

Simply open the "File" menu and select "Log Details" (If this is the first time that you have "logged" information, select "Create New Log File" first). You should be presented with a dialog that looks something like the following :



Type in a description for the log and press the OK button.

After you have "logged" a few records, you can View the Log by selecting the "View Log File" from the "File" Menu.

If there are any Problems/Queries/Suggestions please contact me on Compuserve (Mail Address : 100075,1661) or at the following Address:

Martin Roskelly  
PO Box 1959  
Gallo Manor  
South Africa, 2052

Enjoy the product !!! (it's FREE !!!!)